

Ready to get started with ETM.next?

Sign up for a free product demo and learn how to increase your productivity and achieve higher utilization of your tools and equipment fleets.

We are looking forward to talking to you!



Visit us at www.etmnext.com to learn more about our cutting-edge solution and how it can benefit your industry.

BearingPoint®

BearingPoint is an independent management and technology consultancy with European roots and a global reach. The company operates in three business units: Consulting, Products, and Capital.



Key Facts

€862M

Sales (2022)

4.900

Employees

23

Countries

41

Subsidiaries

181

Partners

1437

Projects

It is Time for the Next-Generation of Equipment and Tools Management

Discover our innovative Digital Management Solution of Equipment, Tools, Machinery and all Fleet Assets, critical for your Business.



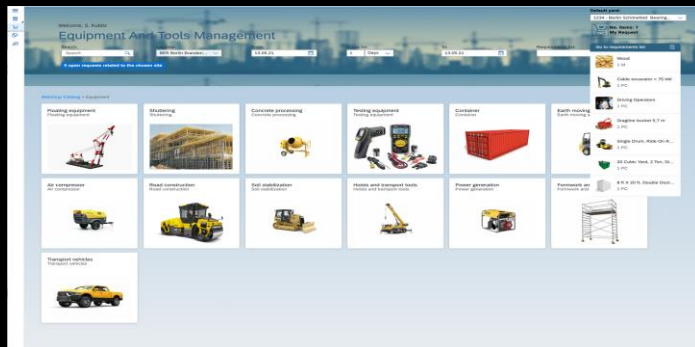
Challenge

- The replacement of fragmented and isolated business processes and data management requires a digital, enterprise-wide solution.
- The innovative power of your company is hindered by a heterogeneous system architecture.
- The systems used are often neither user-friendly nor consistently oriented to the process.
- Key indicators for measuring success are not available for corporate management purposes or are unclear.
- Key indicators for measuring success are not available for corporate management purposes or are unclear.

Track & Trace enabled



Integrated Webshop

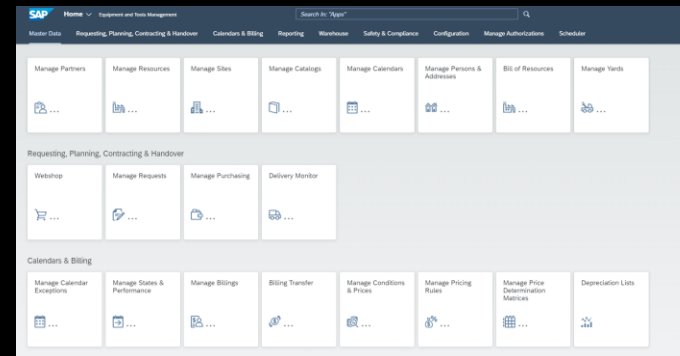


Solution

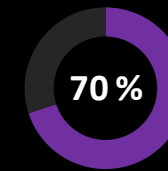


- ETM.next offers systematic coverage of all relevant processes of internal provision, as well as external leasing.
- ETM.next maps the entire lifecycle of the fleet, equipment, tools, and other critical resources.
- ETM.next integrates into existing processes and IT landscapes.
- ETM.next as a digital, cloud-based platform is available as Software as a Service (SaaS).
- ETM.next supports decentralized project work through mobile applications - even offline.

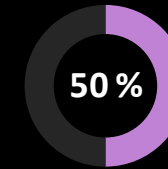
Fiori Launchpad



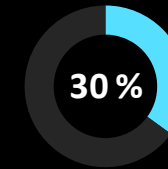
Benefit



Time savings through digitized processes



Increased productivity through harmonization of processes



Increased utilization of critical resources

- The cloud-based architecture allows fast and effective implementation.
- Integration of telematics data from all providers based on industry standards such as ISO 15143-3.
- The solution is role-based and equipped with intuitive user interfaces.

App available

